



42 BIRKDALE DRIVE

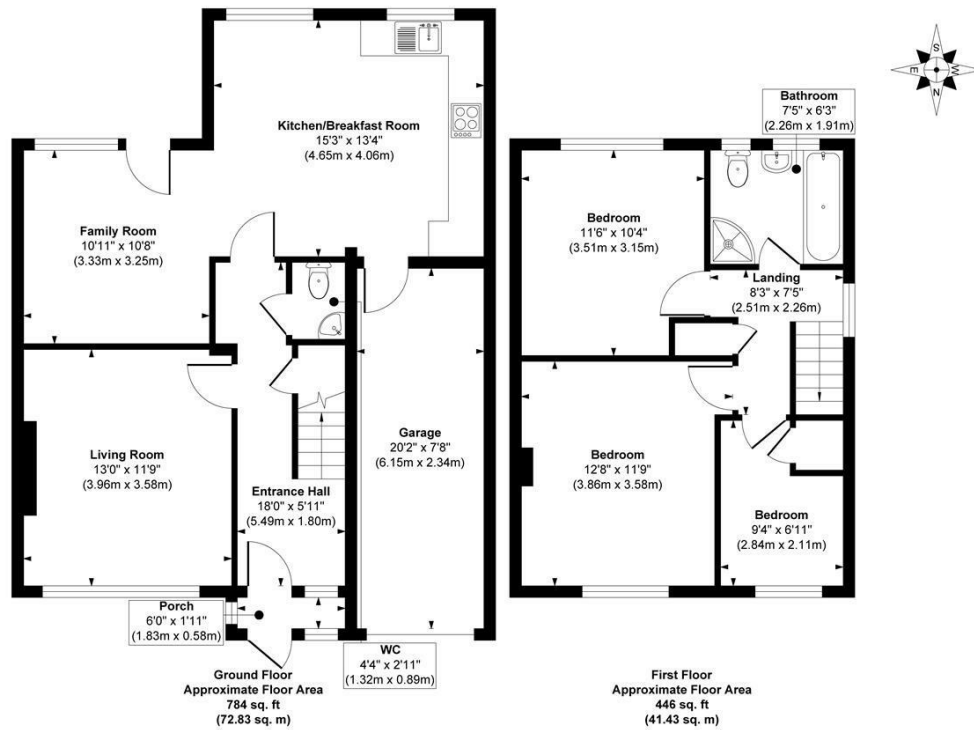
LEEDS, LS17 7RU

£465,000
FREEHOLD

Monroe is proud to showcase this impressive detached three-bedroom, turnkey home. 42 Birkdale Drive is nestled in the heart of the amenity-rich suburb of Alwoodley and well within the highly sought-after Allerton High catchment area.

MONROE

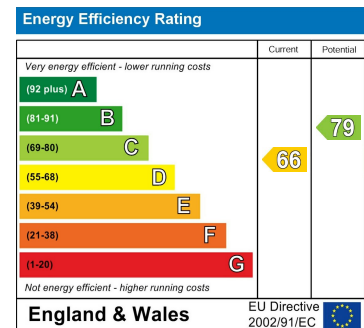
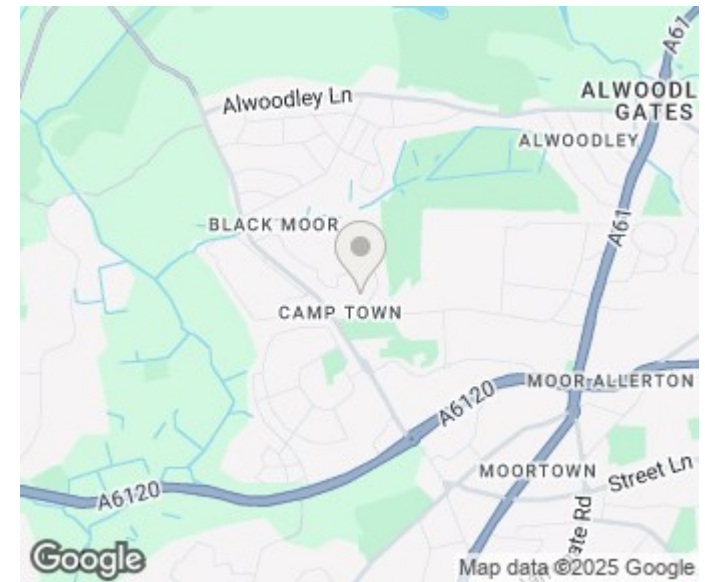
SELLERS OF THE FINEST HOMES



Approx. Gross Internal Floor Area 1230 sq. ft / 114.26 sq. m

Illustration for identification purposes only, measurements are approximate, not to scale.

Copyright © Zenith Creations.



Agents Note: Whilst every care has been taken to prepare these particulars, they are for guidance purposes only. All measurements are approximate and are for general guidance purposes only and whilst every care has been taken to ensure their accuracy, they should not be relied upon and potential buyers/tenants are advised to recheck the measurements

Alwoodley Sales
716 King Lane Alwoodley
Leeds
West Yorkshire
LS17 7BA

0113 870 4443
hello@monroeestateagents.com
www.monroeestateagents.com

MONROE

SELLERS OF THE FINEST HOMES